

Technical data sheet

Mounting foam Insola Multi Foam, all seasons formulation, for DIY use with a straw applicator

Product description:

One-component, ready-to-use polyurethane foam with a straw applicator for sealing windows and door frames, sealing various cavities, joints and inlets, thermal and sound insulation. Adheres well to many building materials such as wood, concrete, stone, plaster, metal, PVC and polystyrene.

Base	Polyurethane
Curing system	Polymerisation due humidity
Density	26-27 kg/m ³
Surface formation time	7 min – 30 mm foam bead
Cutting time	42 min – 30 mm foam bead
Fully cured	24 hours
Water absorption (short-term, partial immersion)	0,19 kg/m ²
Thermal conductivity	0.034 W/(m*k)
Sound reduction index Rst, w	60 dB
Temperature resistance of fully cured product	(-60°C ... +110°C)
Yield (*) (20°C / 65% relative humidity)	Up to 45 litres from 1000 ml

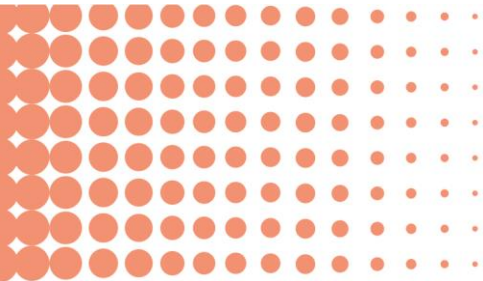
(*) Indicators may vary depending on environmental influences such as the temperature, humidity, etc.

Areas of application:

Foam is used to install doors and windows frames, to insulate and fasten pipes, to fill holes and gaps, for other thermal insulation.

Advantages:

- Great adhesion to many surfaces such as concrete, brick, stone, wood, PVC, aluminium, enamelled surfaces and more (excluding PE and PP, PTFE and silicone).
- Has good thermal and sound insulation.



- Extremely high yield
- Low post expansion
- Short curing time
- Cutting time of 20 min
- Dimensional stability – does not shrink or expand after fully cured

Application conditions:

The air temperature during use can be -10°C to +30°C, although the best results are obtained at +20°C. The temperature of the can during application must be +10°C to +25°C, although the best result is obtained at a temperature of +20°C. Dust, loose particles and oils must be removed from the application surface. The fully cured foam can be painted with non-solvents paints.

Application instructions:

Hold the foam can in upright position. Place the straw applicator on the dispenser valve, press lightly until it locks in, shake the dispenser vigorously at least 20 times. Using the can adapter, turn the applicator down and press with your fingers on it. The amount of foam is adjusted with the applicator trigger. The surface must be moistened as the foam expands when exposed to moisture. Moistened surface gives better results. At low temperatures, the canister should be warmed up in a warm room or water before starting work. The room or water temperature must not exceed +30°C.

Colour:

Yellowish

Packaging:

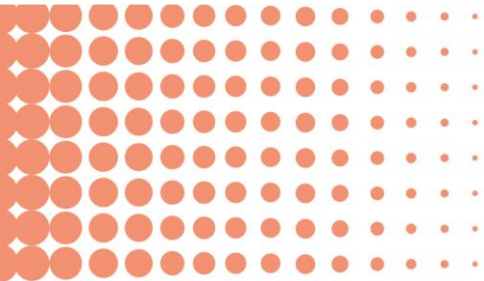
1000 ml aerosol spray, content 750 ml, 12 pcs. in a box.

Shelf life before opening the package: 18 months

Storage:

The bottles should be stored and transported in an upright position. Store in a dry, cool place at a temperature of +5°C to +35°C. Aerosols should not be stored at a temperature above +50°C or in direct sunlight.

Safety requirements:



This product is flammable. Protect from overheating and keep away from sources of ignition. Avoid direct sunlight. Contains isocyanates. May produce an allergic reaction. Wear safety goggles and gloves. Ensure adequate ventilation. Keep out of the reach of children. The can is under pressure. Do not pierce or damage it, even after use.

Detailed safety information is provided in the Safety Data Sheet (SDS).